

**New from
Parker!**

Product Bulletin

Screen Adapters

Parker's screen adapters are designed to protect critical or expensive hydraulic components from catastrophic failure. They utilize a wire mesh screen that can be installed on the tube or port end. They are recommended for low and full flow situations as well as low and high pressure applications.



Key features of the screen adapters:

- In-line or in-port “last chance” protection for critical components
- Typically uses wire mesh for structure and screening
- Available in various screen designs, including flat and basket (see Fig. 1 and Fig. 2)
- Compact size for easy installation



Figure 1- Layered “basket” style

Typical Protection Applications:

- Pilot lines
- Pump compensator controls
- Load sensing lines
- Proportional solenoid valves
- Relief valves
- Tank fillers

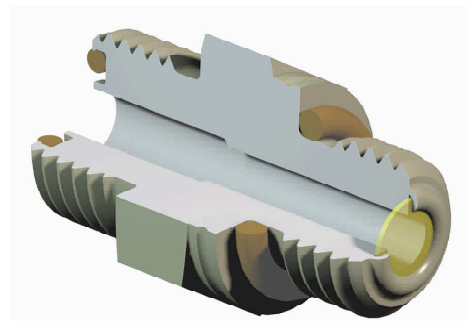


Figure 2 - Three-layer sintered disk style