


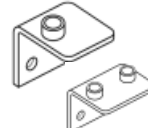


# ***Metric Clamps***



<p><b>Standard Series Normal Mechanical Stress</b></p>	<p><b>RAP</b> Clamp Halves</p>  <p>Size 0    Size 1-6</p> <p>Q4</p>	<p><b>SLA</b> Slotted Screws</p>  <p>Q5</p>	<p><b>SSLA</b> Hex Head Bolt</p>  <p>Q5</p>	<p><b>ISA</b> Cap Screws</p>  <p>Q5</p>	<p><b>ASA</b> Stacking Bolts</p>  <p>Q6</p>
<p><b>APKA</b> Weld Plate-Short</p>  <p>Size 0    Size 1-6</p> <p>Q5</p>	<p><b>APLA</b> Weld Plate-Long</p>  <p>Size 0    Size 1-6</p> <p>Q5</p>	<p><b>APDA</b> Double Weld Plate</p>  <p>Q5</p>	<p><b>APRA</b> Weld Plate-Strip</p>  <p>Q6</p>	<p><b>APWA</b> Weld Plate Angled</p>  <p>Q6</p>	<p><b>TS</b> Mounting Rail</p>  <p>Q6</p>
<p><b>TMA</b> Lock Nut</p>  <p>Q6</p>	<p><b>DPA</b> Top Plate</p>  <p>Size 0    Size 1-6</p> <p>Q6</p>	<p><b>SBA</b> Locking Plate</p>  <p>Q6</p>	<p><b>USA</b> Locking Washer</p>  <p>Q6</p>	<p><b>Heavy Series High Mechanical Stress</b></p>	<p><b>RCP/RCPD</b> Clamp Halves</p>  <p>Q7</p>
<p><b>SSC</b> Hex Head Bolts</p>  <p>Q8</p>	<p><b>ASC</b> Stacking Bolts</p>  <p>Q8</p>	<p><b>ISC</b> Cap Screws</p>  <p>Q8</p>	<p><b>APC</b> Weld Plate</p>  <p>Q8</p>	<p><b>APDC</b> Double Weld Plate</p>  <p>Q8</p>	<p><b>APLC</b> Weld/Screw Plate</p>  <p>Q8</p>
<p><b>TSC</b> Mounting Rail</p>  <p>Q9</p>	<p><b>TMC</b> Lock Nut</p>  <p>Q9</p>	<p><b>DPC</b> Top Plate</p>  <p>Q9</p>	<p><b>DPDC</b> Double Top Plate</p>  <p>Q9</p>	<p><b>SPC</b> Locking Plate</p>  <p>Q9</p>	<p><b>USC</b> Locking Washer</p>  <p>Q9</p>
<p><b>Twin Series Normal Mechanical Stress</b></p>	<p><b>RBP</b> Clamp Halves</p>  <p>Q10</p>	<p><b>SSB</b> Hex Head Bolt</p>  <p>Q10</p>	<p><b>ISB</b> Cap Screws</p>  <p>Q10</p>	<p><b>ASB</b> Stacking Bolts</p>  <p>Q11</p>	<p><b>APB</b> Weld Plate</p>  <p>Q11</p>
<p><b>APRB</b> Strip Weld Plate</p>  <p>Q11</p>	<p><b>TS</b> Mounting Rail</p>  <p>Q11</p>	<p><b>TMB</b> Lock Nut</p>  <p>Q11</p>	<p><b>SBB</b> Locking Plate</p>  <p>Q11</p>	<p><b>DPB</b> Top Plate</p>  <p>Q11</p>	<p><b>US</b> Locking Washer</p>  <p>Q11</p>

## Introduction

The Parker Metric Clamp system is designed for restraining tube, pipe and hose assemblies to dampen unwanted, and potentially harmful effects of mechanical shock and vibration forces that are common in fluid power systems.

The clamping system is the most commonly overlooked aspect of fluid power system design. Failure to properly restrain the fluid conducting system can result in leakage, downtime and system malfunction, as well as significantly reduced life of tube, pipe and hose assemblies. With the Parker Metric Clamp system, the risk of problems resulting from mechanical shock and vibration can be significantly reduced.

## Design and Construction

Designed to meet the basic envelope dimensions of DIN 3015, Part 1, the plastic clamp halves are interchangeable with the ParKlamp system. The primary difference between these two clamping systems is the utilization of inch thread hardware in the ParKlamp system, while the Metric Clamp system utilizes metric hardware.

For convenience, the Metric Clamp system is divided into three different series, Standard, Heavy and Twin. Each series has corresponding components, physical dimensions and mechanical properties. Within each series, there are a number of groups, each with specific envelope dimensions. Components from different series and/or groups can not be intermixed. However, the standard and twin series can be mounted on the same mounted rail.

## How It Works

The Metric Clamp system has two primary methods for mounting: weld plates and mounting rails. Clamps may be mounted to secure a single layer of tube or stacked for securing multiple layers.

Clamps should be mounted to a rigid structure for optimum performance. Clamping tube, pipe or hose assemblies together without mounting them to a rigid structure, often called "floating clamps," does not provide adequate support.

Proper design of a clamping system requires that the clamps be positioned appropriately on the tube, pipe or hose assemblies. See the Assembly and Installation section of the catalog for more information on clamp location and spacing.

### Weld Plate Mounting (Fig. Q1)

The weld plate mounting system allows the user to attach a single clamp assembly to a structure of similar material (steel to steel, etc) by welding the components together. Once the weld plate is attached to a structure, one clamp half can be placed onto the weld plate, followed by the tube, pipe or hose assembly. Next, the second plastic clamp half can be placed on the tube, pipe or hose assembly, followed by the cover plate. To complete the assembly, the Hex Head attachment bolts are inserted into the assembly and tightened.

### Mounting Rail Mounting (Fig. Q2)

Use of a mounting rail is another way to assemble the clamping system components onto a support structure. Using a mounting rail allows multiple clamps to be mounted side-by-side for restraining a group of tube, pipe, or hose assemblies. The mounting rail also provides the ability to move the location of the clamps in one direction for easier alignment. The rail can be attached to a support structure by welding or bolting. Once the mounting rail is in place, rail nuts can be slid into the rail. The first clamp half, followed by the tube, pipe or hose assembly, can then be installed over the corresponding rail nuts. After this, the second clamp half, the cover plate and the hex head attachment bolts can be installed to complete the assembly.



Fig. Q1 – Weld Plate Assembly



Fig. Q2 – Mounting Rail Assembly

### Stacking (Fig. Q3)

A primary feature of the Metric Clamp system is its ability to accommodate stacking of a series of clamps to various heights, thus requiring a smaller footprint for mounting. To do this, simply use the stacking bolts to mount the first clamp assembly, then install a stacking plate over the first clamp and stacking bolts. The second clamp assembly can then be placed over the first clamp assembly. Complete the mounting by assembling a cover plate and using the hex head bolts to tighten the upper clamp assembly. **Note: When stacking, the clamps must be from the same series and group.**



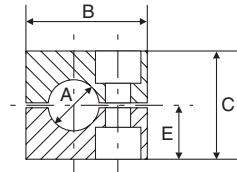
Fig. Q3 – Stacked Assembly



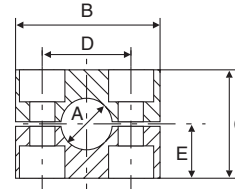
# RAP

## Clamp Halves

TUBE FITTING PART #	GROUP #	A Metric Tube Size	A Inch Pipe Size	A Inch Tube Size	B (mm)	C (mm)	D (mm)	E (mm)	STANDARD FROM STOCK
RAP006X		6							•
RAP008X		8							•
RAP010X		10	1/8						•
RAP012X	0	12			28	27	—	13.5	•
RAP006.4X		6.4		1/4					•
RAP008X		8		5/16					•
RAP009.5X		9.5		3/8					•
RAP106X		6							•
RAP108X		8		5/16					•
RAP110X		10	1/8						•
RAP112X	1	12			34	27	20	13.5	•
RAP106.4X		6.4		1/4					•
RAP109.5X		9.5		3/8					•
RAP214X		14							•
RAP215X		15							•
RAP216X		16		5/8					•
RAP218X	2	18			40	33	26	16.5	•
RAP213.5X		13.5	1/4						•
RAP217.2X		17.2	3/8						•
RAP212.7X		12.7		1/2					•
RAP320X		20							•
RAP322X		22							•
RAP323X		23							•
RAP325X	3	25		1	48	35	33	17.5	•
RAP321.3X		21.3	1/2						•
RAP319X		19		3/4					•
RAP428X		28							•
RAP430X	4	30			57	42	40	21	•
RAP426.9X		26.9	3/4						•
RAP532X		32		1 1/4					•
RAP535X		35							•
RAP538X		38		1 1/2					•
RAP540X		40							•
RAP542X	5	42	1 1/4		70	58	52	29	•
RAP533.7X		33.7	1						•
RAP645X		45							•
RAP648X		48	1 1/2						•
RAP650X		50							•
RAP652X		52							•
RAP655X	6	55			86	66	66	33	•
RAP644.5X		44.45		1 3/4					•
RAP650.8X		50.8		2					•
RAP657X		57		2 1/4					•



Group 0



Groups 1-6

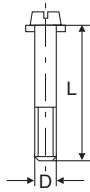
### Material codes for clamp halves:

- Polypropylene - **RAP**
- inside plain - **RAPG (for hose)**
- Polyamide 6 - **RAN (Nylon)**
- inside plain - **RANG (Nylon) (for hose)**
- Aluminum - **RAA**

### SLA

Slotted Screws

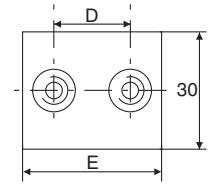
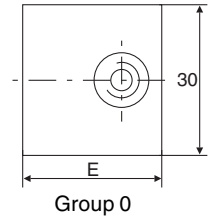
TUBE FITTING PART #	GROUP #	D (mm)	L (mm)	STANDARD FROM STOCK
SLA0X	0	M6 x 1	20	•
SLA2X	2	M6 x 1	25	•
SLA3X	3	M6 x 1	30	•
SLA4X	4	M6 x 1	35	•
SLA5X	5	M6 x 1	50	•
SLA6X	6	M6 x 1	60	•



### APKA

Weld Plate – Short

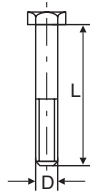
TUBE FITTING PART #	GROUP #	D (mm)	E (mm)	STANDARD FROM STOCK
APKA0X	0	—	30	•
APKA1X	1	20	34	•
APKA2X	2	26	42	•
APKA3X	3	33	50	•
APKA4X	4	40	50	•
APKA5X	5	52	72	•
APKA6X	6	66	88	•



### SSLA

Hex Head Bolt

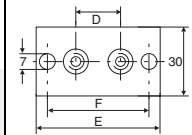
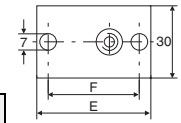
TUBE FITTING PART #	GROUP #	D (mm)	L (mm)	STANDARD FROM STOCK
SSLA0X	0	M6 x 1	30	•
SSLA2/SSB1X	2	M6 x 1	35	•
SSLA3X	3	M6 x 1	40	•
SSLA4X	4	M6 x 1	45	•
SSLA5X	5	M6 x 1	60	•
SSLA6X	6	M6 x 1	70	•



### APLA

Weld Plate – Long

TUBE FITTING PART #	GROUP #	D (mm)	E (mm)	F (mm)	STANDARD FROM STOCK
APLA0X	0	—	58	44	•
APLA1X	1	20	64	50	•
APLA2X	2	26	70	56	•
APLA3X	3	33	78	64	•
APLA4X	4	40	87	73	•
APLA5X	5	52	100	86	•
APLA6X	6	66	116	100	•



### ISA

Cap Screws

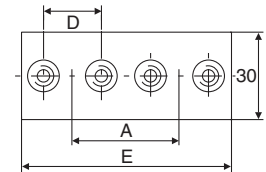
TUBE FITTING PART #	GROUP #	D (mm)	L (mm)	STANDARD FROM STOCK
ISA0X	0	M6 x 1	20	•
ISA2X	2	M6 x 1	25	•
ISA3X	3	M6 x 1	30	•
ISA4X	4	M6 x 1	35	•
ISA5X	5	M6 x 1	50	•
ISA6X	6	M6 x 1	60	•



### APDA

Double Weld Plate

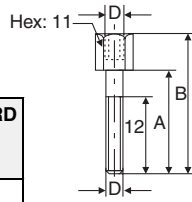
TUBE FITTING PART #	GROUP #	A (mm)	D (mm)	E (mm)	STANDARD FROM STOCK
APDA0X	0	30	—	61	•
APDA1X	1	35	20	69	•
APDA2X	2	43	26	86	•
APDA3X	3	52	33	104	•
APDA4X	4	60	40	120	•
APDA5X	5	75	52	145	•
APDA6X	6	90	66	176	•



### ASA

Stacking Bolts

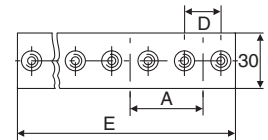
TUBE FITTING PART #	GROUP #	A (mm)	B (mm)	D (mm)	STANDARD FROM STOCK
ASA0X	0	20	34	M6 x 1	•
ASA2X	2	25	39	M6 x 1	•
ASA3X	3	30	44	M6 x 1	•
ASA4X	4	35	49	M6 x 1	•
ASA5X	5	50	64	M6 x 1	•
ASA6X	6	60	74	M6 x 1	•



### APRA

Weld Plate – Strip

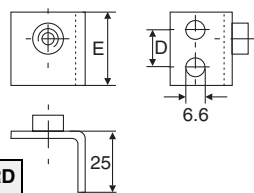
TUBE FITTING PART #	GROUP #	D (mm)	A (mm)	E (mm)	STANDARD FROM STOCK
APRA0X	0	—	30	298	•
APRA1X	1	20	35	394	•
APRA2X	2	26	43	427	•
APRA3X	3	33	52	516	•
APRA4X	4	40	60	297	•
APRA5X	5	52	75	370	•
APRA6X	6	66	90	446	•



### APWA

Weld Plate – Angled

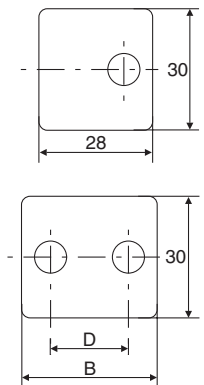
TUBE FITTING PART #	GROUP #	D (mm)	E (mm)	STANDARD FROM STOCK
APWA0X	0	14	30	
APWA1X	1	20	36	
APWA2X	2	26	42	
APWA3X	3	33	50	
APWA4X	4	40	59	
APWA5X	5	52	72	
APWA6X	6	66	88	



### DPA

Top Plate

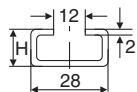
TUBE FITTING PART #	GROUP #	B (mm)	D (mm)	STANDARD FROM STOCK
DPA0X	0	28	—	•
DPA1X	1	34	20	•
DPA2X	2	40	26	•
DPA3X	3	48	33	•
DPA4X	4	57	40	•
DPA5X	5	70	52	•
DPA6X	6	86	66	•



### TS

Mounting Rail

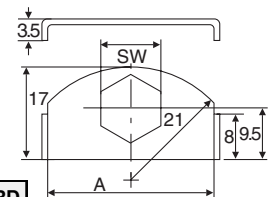
TUBE FITTING PART #	GROUP #	H (mm)	LENGTH (meter)	STANDARD FROM STOCK
TS11A/B1X	ALL	11	1	•
TS14A/B1X	ALL	14	1	•
TS30A/B1X	ALL	30	1	•
TS11A/B2X	ALL	11	2	•
TS14A/B2X	ALL	14	2	•
TS30A/B2X	ALL	30	2	•



### SBA

Locking Plate

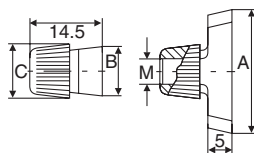
TUBE FITTING PART #	GROUP #	A (mm)	SW (mm)	STANDARD FROM STOCK
SBAX	ALL	30	11	•



### TMA

Lock Nut

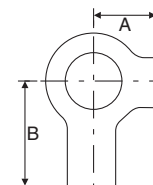
TUBE FITTING PART #	GROUP #	A (mm)	B (mm)	C (mm)	M (mm)	STANDARD FROM STOCK
TMA/TMB1VERZX	ALL	26	11	12	M6 X 1	•



### USA

Locking Washer

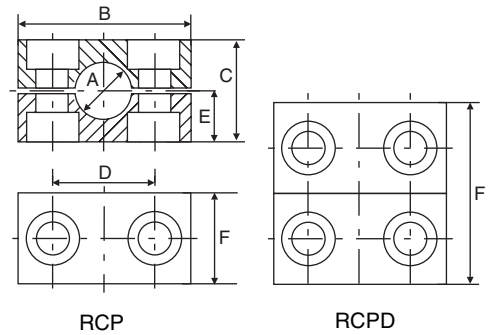
TUBE FITTING PART #	GROUP #	A (mm)	B (mm)	STANDARD FROM STOCK
USA/IS1X	ALL	9	10	•



# RCP / RCPD

Clamp Halves

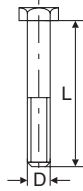
TUBE FITTING PART #	GROUP #	A Metric Tube Size	A Inch Pipe Size	A Inch Tube Size	B (mm)	C (mm)	D (mm)	E (mm)	F (mm)	STANDARD FROM STOCK
RCP108X		8		5/16						•
RCP110X		10								•
RCP112X		12								•
RCP113.5X	1	13.5	1/4							•
RCP114X		14			55	32	33	16	30	•
RCP115X		15								•
RCP116X		16		5/8						•
RCP117.2X		17.2	3/8							•
RCP118X		18								•
RCP220X		20								•
RCP221.3X		21.3	1/2							•
RCP222X		22								•
RCP223X	2	23			70	48	45	24	30	•
RCP225X		25		1						•
RCP226.9X		26.9	3/4							•
RCP228X		28								•
RCP330X		30								•
RCP332X		32		1 1/4						•
RCP333.7X		33.7	1							•
RCP335X	3	35			85	60	60	30	30	•
RCP338X		38		1 1/2						•
RCP340X		40								•
RCP342X		42	1 1/4							•
RCP438X		38		1 1/2						•
RCP440X		40								•
RCP442X		42	1 1/4							•
RCP445X		45								•
RCP448.3X	4	48.3	1 1/2							•
RCP450X		50			115	90	90	45	45	•
RCP451X		51		2						•
RCP452X		52								•
RCP455X		55								•
RCP457X		57		2 1/4						•
RCP460.3X		60.3	2							•
RCP463X		63		2 1/2						•
RCP465X		65								•
RCP470X		70								•
RCP570X		70								•
RCP576.1X	5	76.1	2 1/2	3						•
RCP580X		80			152	120	122	60	60	•
RCP582.5X		82.5		3 1/4						•
RCP588.9X		88.9	3	3 1/2						•
RCP690X		90								•
RCP6101.6X	6	101.6		4						•
RCP6108X		108		4 1/4	205	170	168	85	80	•
RCP6114.3X		114.3		4 1/2						•
RCP6127X		127		5						•
RCP7127X		127		5						•
RCP7133X		133		5 1/4						•
RCP7140X		140	5	5 1/2						•
RCP7152.4X	7	152.4	5 1/2	6	250	200	205	100	90	•
RCP7159X		159		6 1/4						•
RCP7165.1X		165.1	6	6 1/2						•
RCP7168.3X		168.3		6 5/8						•
RCP8168.3X		168.3		6 5/8						•
RCP8177.8X	8	177.8		7	320	270	265	135	120	•
RCP8193.7X		193.7		7 5/8						•
RCP8219.1X		219.1	8	8 5/8						•



**Material codes for clamp halves:**  
 Polypropylene - RCP  
 inside plain - RCPG (for hose)  
 Polyamide 6 - RCN  
 inside plain - RCNG (for hose)  
 Aluminum - RCA

**SSC**

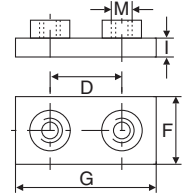
Hex Head Bolts



TUBE FITTING PART #	GROUP #	D (mm)	L (mm)	STANDARD FROM STOCK
SSC1X	1	M10 x 1	45	•
SSC2X	2	M10 x 1	60	•
SSC3X	3	M10 x 1	70	•
SSC4X	4	M12 x 1.5	100	•
SSC5X	5	M16 x 2	130	•
SSC6X	6	M20 x 2	190	•
SSC7X	7	M24 x 2	220	•
SSC8X	8	M30 x 2	300	•

**APC**

Weld Plate

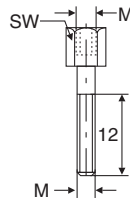


TUBE FITTING PART #	GROUP #	D (mm)	F (mm)	G (mm)	I (mm)	M (mm)	STANDARD FROM STOCK
APC1X	1	33	30	73	8	M10 x 1	•
APC2X	2	45	30	85	8	M10 x 1	•
APC3X	3	60	30	100	8	M10 x 1	•
APC4X	4	90	45	140	10	M12 x 1.5	•
APC5X	5	122	60	180	10	M16 x 2	•
APC6X	6	168	80	225	15	M20 x 2	•
APC7X	7	205	90	270	15	M24 x 2	•
APC8X	8	265	120	340	25	M30 x 2	•



**ASC**

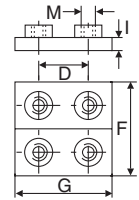
Stacking Bolts



TUBE FITTING PART #	GROUP #	M (mm)	SW (mm)	STANDARD FROM STOCK
ASC1X	1	M10 x 1	15	•
ASC2X	2	M10 x 1	15	•
ASC3X	3	M10 x 1	15	•
ASC4X	4	M12 x 1.5	17	•
ASC5X	5	M16 x 2	21	•
ASC6X	6	M20 x 2	27	•
ASC7X	7	M24 x 2	29	•
ASC8X	8	M30 x 2	35	•

**APDC**

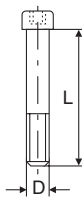
Double Weld Plate



TUBE FITTING PART #	GROUP #	D (mm)	F (mm)	G (mm)	I (mm)	M (mm)	STANDARD FROM STOCK
APDC1X	1	33	60	73	8	M10 x 1	•
APDC2X	2	45	60	85	8	M10 x 1	•
APDC3X	3	60	60	100	8	M10 x 1	•
APDC4X	4	90	90	140	10	M12 x 1.5	•
APDC5X	5	152	120	180	10	M16 x 2	•
APDC6X	6	168	160	225	15	M20 x 2	•
APDC7X	7	205	180	270	15	M24 x 2	•
APDC8X	8	265	240	340	25	M30 x 2	•

**ISC**

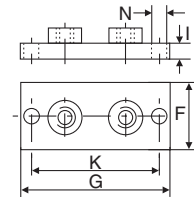
Cap Screws



TUBE FITTING PART #	GROUP #	D (mm)	L (mm)	STANDARD FROM STOCK
ISC1X	1	M10 x 1	45	•
ISC2X	2	M10 x 1	60	•
ISC3X	3	M10 x 1	70	•
ISC4X	4	M12 x 1.5	100	•
ISC5X	5	M16 x 2	130	•
ISC6X	6	M20 x 2	190	•
ISC7X	7	M24 x 2	220	•
ISC8X	8	M30 x 2	300	•

**APLC**

Weld / Screw Plate



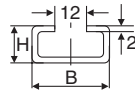
TUBE FITTING PART #	GROUP #	F (mm)	G (mm)	I (mm)	K (mm)	N (mm)	STANDARD FROM STOCK
APLC1X	1	30	113	8	85	11	•
APLC2X	2	30	125	8	97	11	•
APLC3X	3	30	140	8	112	11	•
APLC4X	4	45	190	10	160	14	•
APLC5X	5	60	240	10	205	18	•
APLC6X	6	80	310	15	270	22	•
APLC7X	7	90	370	15	320	26	•
APLC8X	8	120	450	25	390	33	•





### TSC

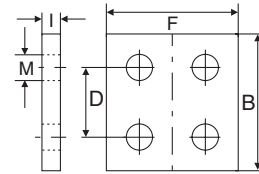
Mounting Rail



TUBE FITTING PART #	GROUP #	B (mm)	H (mm)	LENGTH (meter)	STANDARD FROM STOCK
TSC1X	ALL	40	22	1	•
TSC2X	ALL	40	22	2	•

### DPDC

Double Top Plate

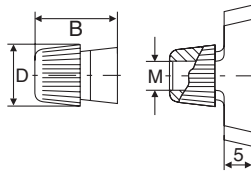


TUBE FITTING PART #	GROUP #	B (mm)	D (mm)	F (mm)	I (mm)	M (mm)	STANDARD FROM STOCK
DPDC1X	1	55	33	60	8	11	•
DPDC2X	2	70	45	60	8	11	•
DPDC3X	3	85	60	60	8	11	•
DPDC4X	4	115	90	90	10	14	•
DPDC5X	5	152	122	120	10	18	•
DPDC6X	6	205	168	160	15	22	•
DPDC7X	7	250	205	180	15	26	•
DPDC8X	8	320	365	240	25	33	•



### TMC

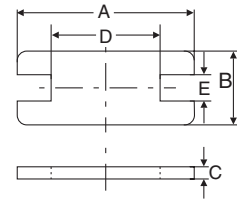
Lock Nut



TUBE FITTING PART #	GROUP #	B (mm)	D (mm)	M (mm)	STANDARD FROM STOCK
TMC1X	1-3	20	17.9	M10 x 1	•
TMC4X	4	20	19.8	M12 x 1.5	•

### SPC

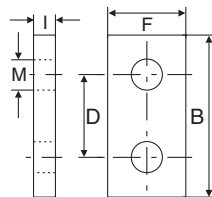
Locking Plate



TUBE FITTING PART #	GROUP #	A (mm)	B (mm)	C (mm)	D (mm)	E (mm)	STANDARD FROM STOCK
SPC1X	1	55	30	8	14	15.5	•
SPC2X	2	70	30	8	26	15.5	•
SPC3X	3	85	30	8	41	15.5	•
SPC4X	4	115	45	10	69	17.5	•
SPC5X	5	152	60	10	97	21.5	•
SPC6X	6	205	80	15	137	27.5	•
SPC7X	7	250	90	15	169	29.5	•
SPC8X	8	320	120	25	219	35.5	•

### DPC

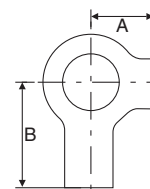
Top Plate



TUBE FITTING PART #	GROUP #	B (mm)	D (mm)	F (mm)	I (mm)	M (mm)	STANDARD FROM STOCK
DPC1X	1	55	33	30	8	11	•
DPC2X	2	70	45	30	8	11	•
DPC3X	3	85	60	30	8	11	•
DPC4X	4	115	90	45	10	14	•
DPC5X	5	152	122	60	10	18	•
DPC6X	6	205	168	80	15	22	•
DPC7X	7	250	205	90	15	26	•
DPC8X	8	320	365	120	25	33	•

### USC

Locking Washer



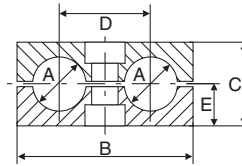
TUBE FITTING PART #	GROUP #	A (mm)	B (mm)	STANDARD FROM STOCK
USC1X	1	13	22	
USC2X	2	13	22	
USC3X	3	13	22	
USC4X	4	15	28	•
USC5X	5	18	32	
USC6X	6	21	36	
USC7X	7	25	42	
USC8X	8	32	52	





# RBP

Clamp Halves



TUBE FITTING PART #	GROUP #	A Metric Tube Size	A Inch Pipe Size	A Inch Tube Size	B (mm)	C (mm)	D (mm)	E (mm)	STANDARD FROM STOCK	
RBP106X	1	6							•	
RBP106.4X		6.4		1/4					•	
RBP108X		8				36	27	20	13.5	•
RBP109.5X		9.5		3/8						•
RBP110X		10								•
RBP112X	12								•	
RBP212.7X	2	12.7							•	
RBP213.5X		13.5	R1/4						•	
RBP214X		14							•	
RBP215X		15		1/2	53	26	29	13	•	
RBP216X		16							•	
RBP217.2X	17.2	R3/8						•		
RBP218X	18							•		
RBP319X	3	19							•	
RBP320X		20							•	
RBP321.3X		21.3	R1/2		67	37	36	18.5	•	
RBP322X		22							•	
RBP325X		25							•	
RBP426.9X	4	26.9	R3/4						•	
RBP428X		28			82	42	45	21	•	
RBP430X		30							•	
RBP532X	5	32							•	
RBP533.7X		33.7	R1						•	
RBP535X		35			106	54	56	27	•	
RBP538X		38							•	
RBP542X		42							•	

**Material codes for clamp halves:**

- Polypropylene - RBP
- inside plain - RBPG (for hose)
- Polyamide 6 - RBN
- inside plain - RBNG (for hose)

# SSB

Hex Head Bolt

TUBE FITTING PART #	GROUP #	D (mm)	L (mm)	STANDARD FROM STOCK
SSLA2/SSB1X	1	M6 x 1	35	•
SSB2X	2	M8 x 1	35	•
SSB3X	3	M8 x 1	45	•
SSB4X	4	M8 x 1	50	•
SSB5X	5	M8 x 1	60	•



# ISB

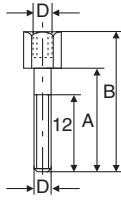
Cap Screws

TUBE FITTING PART #	GROUP #	D (mm)	L (mm)	STANDARD FROM STOCK
ISB1X	1	M6 x 1	35	•
ISB2X	2	M8 x 1	35	•
ISB3X	3	M8 x 1	45	•
ISB4X	4	M8 x 1	50	•
ISB5X	5	M8 x 1	60	•



### ASB

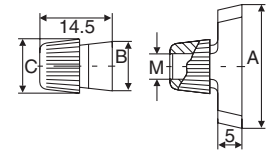
Stacking Bolts



TUBE FITTING PART #	GROUP #	D (mm)	A (mm)	B (mm)	STANDARD FROM STOCK
ASB1X	1	M6 x 1	20	34	•
ASB2X	2	M8 x 1	20	33	•
ASB3X	3	M8 x 1	29	44	•
ASB4X	4	M8 x 1	34	49	•
ASB5X	5	M8 x 1	47	62	•

### TMB

Lock Nut

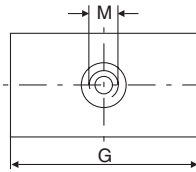


TUBE FITTING PART #	GROUP #	A (mm)	B (mm)	C (mm)	M (mm)	STANDARD FROM STOCK
TMB1/TMAVERZX	1	26	11	12	M6 x 1	•
TMB2X	2-5	26	11	14	M8 x 1	•



### APB

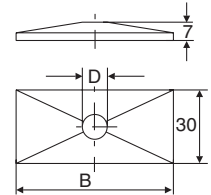
Weld Plate



TUBE FITTING PART #	GROUP #	G (mm)	M (mm)	STANDARD FROM STOCK
APB1X	1	37	M6 x 1	•
APB2X	2	55	M8 x 1	•
APB3X	3	70	M8 x 1	•
APB4X	4	85	M8 x 1	•
APB5X	5	110	M8 x 1	•

### DPB

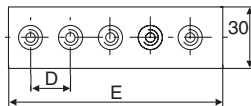
Top Plate



TUBE FITTING PART #	GROUP #	B (mm)	D (mm)	STANDARD FROM STOCK
DPB1X	1	34	6.6	•
DPB2X	2	51	8.6	•
DPB3X	3	64	8.6	•
DPB4X	4	78	8.6	•
DPB5X	5	102	8.6	•

### APRB

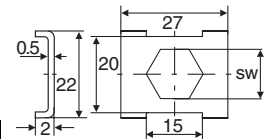
Weld Plate – Strip



TUBE FITTING PART #	GROUP #	D (mm)	E (mm)	STANDARD FROM STOCK
APRB1X	1	40	196	•
APRB2X	2	58	288	•
APRB3X	3	72	358	•
APRB4X	4	90	446	•
APRB5X	5	112	558	•

### SBB

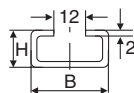
Locking Plate



TUBE FITTING PART #	GROUP #	SW (mm)	STANDARD FROM STOCK
SBB1X	1	11	•
SBB2X	2-5	12	•

### TS

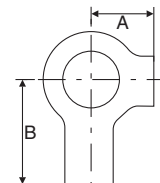
Mounting Rail



TUBE FITTING PART #	GROUP #	B (mm)	H (mm)	LENGTH (meter)	STANDARD FROM STOCK
TS11A/B1X	ALL	28	11	1	•
TS14A/B1X	ALL	28	14	1	•
TS30A/B1X	ALL	28	30	1	•
TS11A/B2X	ALL	28	11	2	•
TS14A/B2X	ALL	28	14	2	•
TS30A/B2X	ALL	28	30	2	•

### US

Locking Washer



TUBE FITTING PART #	GROUP #	A (mm)	B (mm)	STANDARD FROM STOCK
USA/USB1XX	1	9	18	•
USB2X	2-5	11	20	•